

Energy Efficiency Rating		Current	Potential
Very energy efficient - lower running costs			
(92 plus) A			87
(81-91) B			
(69-80) C		75	
(55-68) D			
(39-54) E			
(21-38) F			
(1-20) G			
Not energy efficient - higher running costs			
England & Wales		EU Directive 2002/91/EC	

These particulars, whilst believed to be accurate are set out as a general outline only for guidance and do not constitute any part of an offer or contract. Intending purchasers should not rely on them as statements of representation of fact, but must satisfy themselves by inspection or otherwise as to their accuracy. No person in this firm's employment has the authority to make or give any representation or warranty in respect of the property.

The Meadows, Darwen, BB3 0PF

Offers Over £279,950

Welcome to this charming four-bedroom detached house located in the desirable area of The Meadows, Darwen. This property is perfect for families seeking a modern and comfortable home. As you enter, you will be greeted by a stylish and contemporary interior that is ready for you to move in without any hassle. The ground floor boasts a spacious lounge, ideal for relaxing with family or entertaining guests. The dining room flows seamlessly from the lounge, creating a wonderful space for family meals and gatherings. The fitted kitchen is well-equipped, making cooking a delight, and there is a separate utility room that adds convenience to your daily routine. Additionally, the property features a generous downstairs WC, enhancing practicality for family living. Upstairs, you will find four spacious bedrooms, each offering ample space for rest and relaxation. The master bedroom benefits from an en suite shower room, providing a private retreat. The family bathroom is also well-appointed, ensuring comfort for all family members. Outside, the lovely rear garden is a standout feature, providing a perfect space for children to play or for hosting summer barbecues. The integral garage and driveway offer convenient parking options, making this home both functional and appealing. Situated in a sought-after location, this property is close to excellent transport links and reputable schools, making it an ideal choice for families. This delightful home combines modern living with a welcoming atmosphere, making it a must-see for anyone looking to settle in Darwen. Don't miss the opportunity to make this wonderful house your new home.

The Meadows, Darwen, BB3 OPF

Offers Over £279,950

 4  2  2  C

- Detached Property
- Two Reception Rooms
- Off Road Parking
- EPC Rating C
- Four Bedrooms
- En Suite To Main Bedroom
- Leasehold
- Fitted Kitchen
- Front & Rear Gardens
- Council Tax Band C

Ground Floor

Entrance Porch

3'1 x 2'10 (0.94m x 0.86m)

UPVC double glazed front entrance door, wood effect flooring and door to the hallway.

Hallway

16'9 x 2'10 (5.11m x 0.86m)

Central heating radiator, wood effect flooring, stairs to the first floor and doors to garage, kitchen, two reception rooms and WC.

Kitchen

10'11 x 9'1 (3.33m x 2.77m)

UPVC double glazed window, range of panelled wall and base units with granite effect surfaces, stainless steel one and a half bowl sink with drainer and mixer tap, oven with four ring gas hob, extractor hood, plumbing for dishwasher, space for fridge freezer, spotlights, wood effect flooring and door to the utility.

Utility Room

5'10 x 4'9 (1.78m x 1.45m)

Central heating radiator, range of panelled base units with granite effect surfaces, plumbing for washing machine, space for dryer, spotlights, extractor fan, wood effect flooring and UPVC double glazed door to the side elevation.

WC

4'10 x 3'5 (1.47m x 1.04m)

UPVC double glazed frosted window, central heating radiator, dual flush WC, wall mounted wash basin, extractor fan and wood effect flooring.

Reception Room One

15'3 x 11'8 (4.65m x 3.56m)

Central heating radiator, wood effect flooring and UPVC double glazed French doors to the rear.

Reception Room Two

11'5 x 8'11 (3.48m x 2.72m)

UPVC double glazed window, central heating radiator and wood effect flooring.

Garage

17' x 8'8 (5.18m x 2.64m)

Power

First Floor

Landing

10' x 5'10 (3.05m x 1.78m)

UPVC double glazed window, central heating radiator, loft access, smoke alarm and doors to four bedrooms and bathroom.

Bedroom One

12'4 x 11' (3.76m x 3.35m)

UPVC double glazed window, central heating radiator and door to en suite.

En Suite

5'10 x 5'9 (1.78m x 1.75m)

UPVC double glazed frosted window, central heating towel rail, dual flush WC, pedestal wash basin, direct feed shower unit, part tiled elevations, spotlights, extractor fan and tile effect flooring.

Bedroom Two

13'3 x 10'9 (4.04m x 3.28m)

UPVC double glazed window, central heating radiator, fitted storage and wood effect flooring.

Bedroom Three

9'11 x 7'1 (3.02m x 2.16m)

UPVC double glazed window and central heating radiator.

Bedroom Four

9'9 x 8'7 (2.97m x 2.62m)

UPVC double glazed window, central heating radiator and spotlights.

Bathroom

6'6 x 5'9 (1.98m x 1.75m)

UPVC double glazed frosted window, central heating radiator, dual flush WC, pedestal wash basin, panelled bath with direct feed shower overhead, part tiled elevations, spotlights and tile effect flooring.

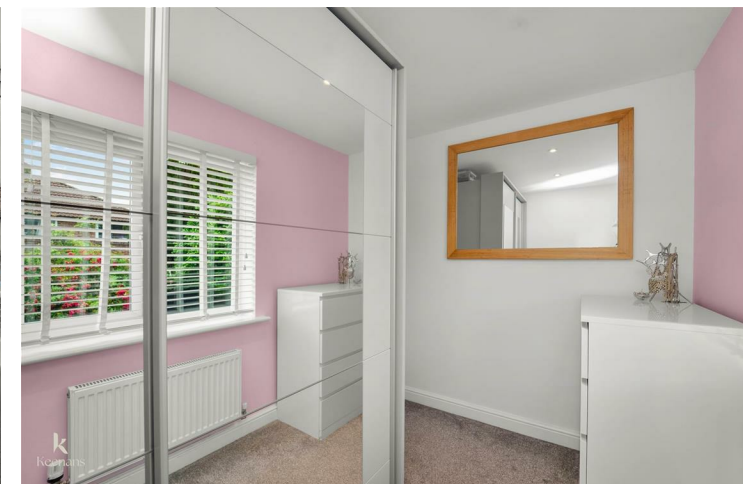
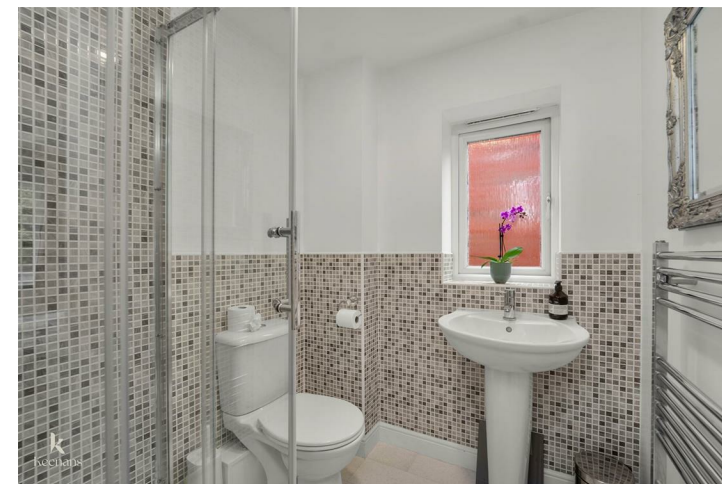
External

Front

Laid to lawn garden and driveway providing off road parking.

Rear

Enclosed laid to lawn garden with stone paving and planted beds.



Tel: 01254916276

www.keenans-estateagents.co.uk